

**BroadJump & CommWorks
Combine to Provide Complete End-to-End Solutions to
Eliminate Truck-rolls for Broadband Installations and to
Streamline Broadband Networking Infrastructures**

Overview

With the explosive growth of the Internet and the emergence of rich bandwidth-hungry applications driving a constant need for higher-speed connectivity, broadband has now take center stage as a lucrative market opportunity for carriers and service providers. As a matter of fact, in many cases it has become a critical differentiating factor that can open the door for also delivering an array of ancillary services, or if the carrier doesn't have a broadband solution, for losing those revenues to a competitor that does.

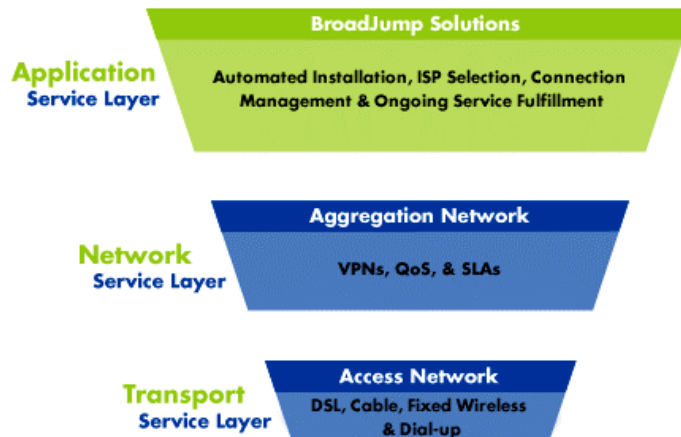
As with many such rapidly unfolding market opportunities, the window for success is extremely small. Carriers that cannot move fast enough with their deployments of consumer-friendly broadband solutions will not only miss the initial market window; they also may miss the entire broadband opportunity. Thus far, the complexity of qualifying and installing broadband hook-ups has also kept per/customer start-up expenses at too high of a level to support early stage profitability of broadband services until subscriber rates reach a relatively high critical mass.

In addition, the infrastructure issues involved with terminating large numbers of broadband connections and smoothly linking broadband offerings into the carriers' overall network environments often pose technology and compatibility challenges that can significantly delay broadband service rollout. In effect, many providers have been caught between a rock and a hard place – needing to offer broadband services to stay competitive but unable to effectively follow-through and deliver on their marketing promises or to make a near-term profit on their incremental broadband sales.

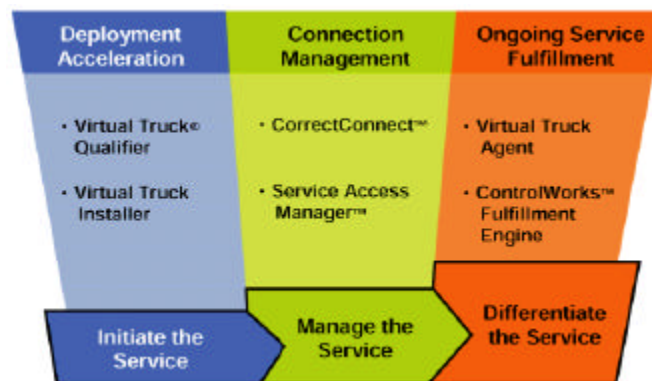
The partnership between BroadJump Inc. and CommWorks Corporation addresses these critical issues by providing a complete end-to-end solution that allows for highly efficient qualification and installation with no truck-rolls on the front-end, plus comprehensive infrastructure and management capabilities on the back-end. This document provides a brief overview of the BroadJump software and the CommWorks Total Control® systems solutions architecture, with a focus on the benefits for service providers to leverage the CommWorks – BroadJump alliance.

Comprehensive BroadJump Software Solutions

BroadJump's software architecture enables service providers to streamline qualification, installation and on-going management for connection of DSL, cable or wireless residential broadband services. Residing at the applications layer, BroadJump's solutions supply the intelligence to remotely deploy, support and enhance broadband services. BroadJump's software automatically bridges the operational gap between network elements and the end-users' on-site broadband devices, thus enabling services to be seamlessly delivered and centrally managed from the network operations center.



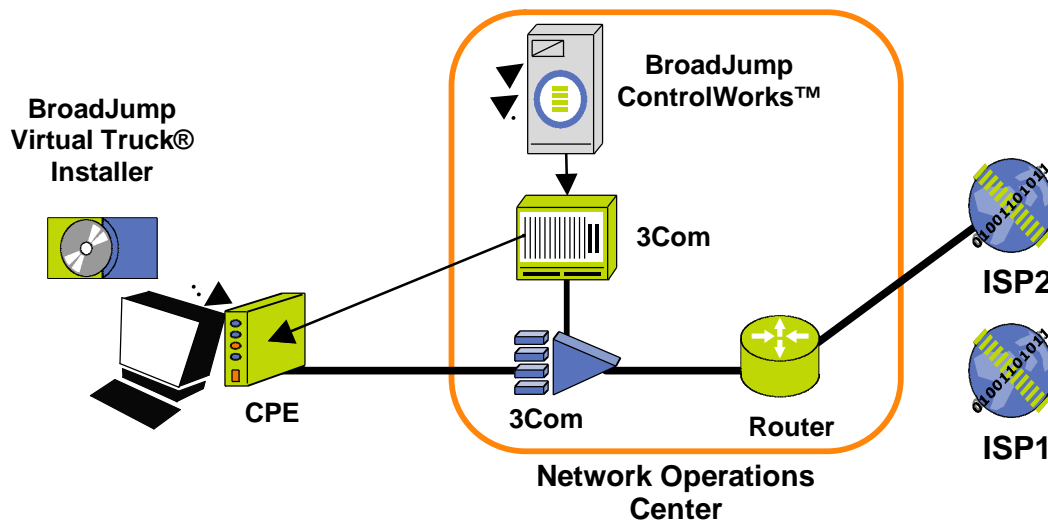
By leveraging BroadJump solutions within their network infrastructure, service providers can increase customer satisfaction with faster turnaround on installation requests, while virtually eliminating the high-cost of truck-rolls and unnecessary technician time spent at remote user locations. BroadJump's Virtual Truck® software automatically installs whatever software is needed on the remote Customer Premises Equipment (CPE), thus supporting quick and simple self-installation of the remote end by virtually any end-user. In addition, BroadJump's CorrectConnect™ enables on-going monitoring of the remote broadband modem's health and connection status as well as supporting customers in solving simple connection issues without requiring a support call. BroadJump software solutions also provide built-in opportunities for continuous differentiation and service enhancements to maximize new revenue opportunities and ensure customer retention.



CommWorks & BroadJump: A Seamless End-to-End Broadband Infrastructure

BroadJump's comprehensive software and CommWorks advanced system solutions for terminating and managing high numbers of DSL or cable modem connections give service providers a seamless end-to-end pre-qualified infrastructure for efficiently deploying and ramping up virtually any set of broadband service offerings.

As shown below, by deploying CommWorks Total Control® DSL Access Concentrators or Cable Modem Termination System (CTMS) products within the network operations center, carriers can efficiently create a robust foundation for leveraging the BroadJump software capabilities to unify management of both the Ops Center and the CPE hardware.



CommWorks' DSL Concentrator and CTMS systems provide carriers with complete self-contained solutions for handling the whole spectrum of broadband termination issues within small-footprint, low-power and smoothly scalable system architectures. Whether the specific need is for a multi-speed multi-service DSL system with integrated VoDSL, VPN and Frame Relay support or for a complete cable management system with full DOCSIS management, CommWorks offerings provide the complete linkage solution between the broadband connections and the Internet. In addition, the CommWorks carrier-class 3-tiered architecture delivers seamless support across the full spectrum of applications development, system management and media processing requirements, thereby enabling service providers and their strategic partners to efficiently create and deploy value-added applications across broadband environment.

The bottom line is that the working alliance between CommWorks and BroadJump now gives service providers a full, comprehensive and interoperable set of solutions needed to effectively exploit broadband market opportunities. When deployed in conjunction with BroadJump's software to simplify and manage all aspects of the user-side connection, the CommWorks Total Control solutions form the heart of a complete end-to-end broadband infrastructure that can immediately yield faster service provisioning, lowered costs and greatly enhanced customer satisfaction.